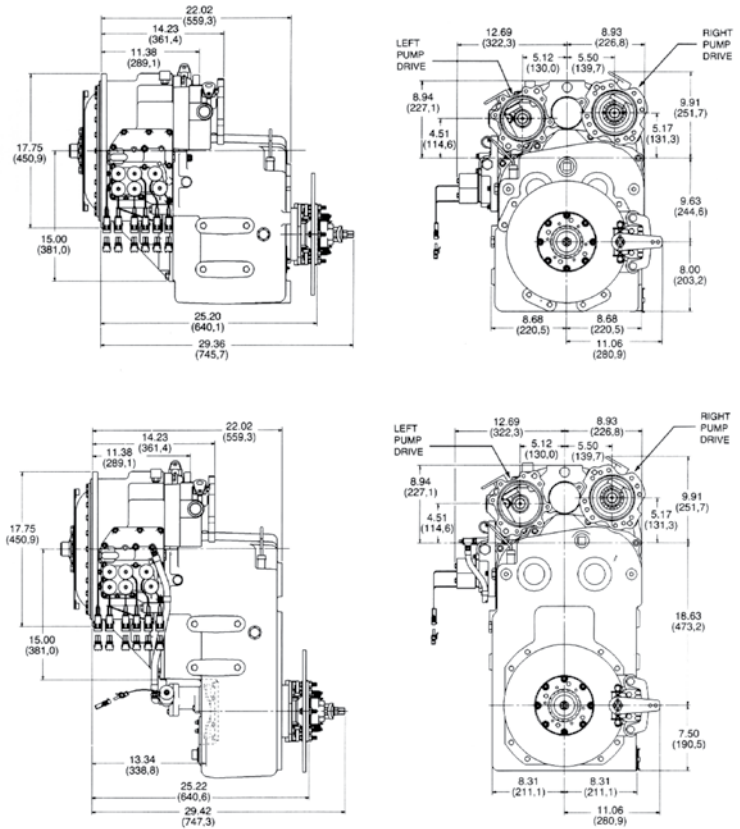


Funk 2000 Series Powershift Transmission

Industrial Drivetrain Specifications



Dimensions



Ratings

| | |
|------------------------------|----------------------|
| Net input power (max) | 168 kW (225 hp) |
| Input no load speed (max) | 3000 rpm |
| Converter stall torque (max) | 1627 Nm (1200 lb-ft) |

General data

Rotation

| | |
|------------------------|--------------------------|
| Input | Counterclockwise |
| Output (forward gears) | |
| Counterclockwise | 473.2 mm (18.63 in) drop |
| Clockwise | 244.6 mm (9.63 in) drop |

Weight

| | |
|-------------------------|-----------------|
| 244.6 mm (9.6 in) drop | 337 kg (742 lb) |
| 473.2 mm (18.6 in) drop | 408 kg (900 lb) |

| | |
|----------|----------------------------|
| Mounting | Engine, midship, or remote |
|----------|----------------------------|

Controls

Electrical or mechanical

Options

- Ground speed rpm
- Engine-side disconnect
- Integral no-spin differential
- Disc parking brake
- HMD or converter input

Pump Drives

| | Left side | Right side |
|---|------------------|------------------|
| Rotation (viewing drive page) | Counterclockwise | Counterclockwise |
| Ratio (engine speed to pump speed) | 1:1 | 1.15:1 |
| Mounting and spline size | SAE A, B, or C | SAE A, B, or C |
| Disconnect available for mounting size | SAE C | SAE C and B |
| Power (max intermittent) | 168 kW (225 hp) | 168 kW (225 hp) |

Specifications and design subject to change without notice. Ratings may vary depending on application and service. Application and installation are subject to review by John Deere.

Photographs may show non-standard equipment.

Gear ratio ranges

| Drop mm (in) | Version | Forward | | | | | | Reverse | | |
|-----------------|---------|---------|------|------|------|------|------|---------|------|------|
| | | 1st | 2nd | 3rd | 4th | 5th | 6th | 1st | 2nd | 3rd |
| 244.6 (9.63) | 3/3 | 3.68 | 2.50 | 1.00 | – | – | – | 3.68 | 2.50 | 1.00 |
| | 3/3 | 5.80 | 2.50 | 1.00 | – | – | 5.80 | 2.50 | 1.00 | – |
| | 4/3 | 6.50 | 4.42 | 1.77 | 1.00 | – | – | 6.50 | 4.42 | 1.77 |
| | 4/3 | 10.25 | 4.42 | 1.77 | 1.00 | – | – | 6.50 | 4.42 | 1.77 |
| | 6/3 | 6.50 | 4.42 | 3.68 | 2.50 | 1.77 | 1.00 | 6.50 | 4.42 | 1.77 |
| | 6/3 | 8.77 | 5.80 | 3.78 | 2.50 | 1.51 | 1.00 | 10.25 | 4.42 | 1.77 |
| 473.2 (18.63) | 6/3 | 10.25 | 5.80 | 4.42 | 2.50 | 1.77 | 1.00 | 10.25 | 4.42 | 1.77 |
| | 3/3 | 2.94 | 2.00 | 0.80 | – | – | – | 2.94 | 2.00 | 0.80 |
| | 3/3 | 4.64 | 2.00 | 0.80 | – | – | – | 4.64 | 2.00 | 0.80 |
| | 4/3 | 5.20 | 2.94 | 1.41 | 0.80 | – | – | 5.20 | 3.53 | 1.41 |
| | 4/3 | 8.20 | 3.53 | 1.41 | 0.80 | – | – | 8.20 | 3.53 | 1.41 |
| | 6/3 | 5.20 | 3.53 | 2.94 | 2.00 | 1.41 | 0.80 | 5.20 | 3.53 | 1.41 |
| | 6/3 | 7.01 | 4.64 | 3.02 | 2.00 | 1.21 | 0.80 | 8.20 | 3.53 | 1.41 |
| | 6/3 | 8.20 | 4.64 | 3.53 | 2.00 | 1.41 | 0.80 | 8.20 | 3.53 | 1.41 |

Features and benefits

Flexible drive types

The 2000 Series has the input drive options demanded by most industrial applications. Torque converter or HMD are available, giving you the flexibility to design your machine to fit your needs.

No-spin differential

This output shaft option is a must for 4WD towing vehicles that operate on high-traction surfaces. Eliminate unnecessary tire wear with the only limited-slip differential in the industry.

Electric control valves

This type of transmission shift control is your best option for vehicles used in remote locations. Electronic control offers flexibility and the easy serviceability of mechanical control.

Mountings

Engine

SAE #3 standard (SAE #2 optional) dry converter housing with flex plate converter drive. Side-mounting pads are recommended for engine/transmission cradle-mounting.

Midship

Side-mounting pads and input bill (engine-mounted torsional damper required).

Remote

Two side-mounting pads (engine-mounted torque converter PTO with charge pump required).

Clutches

Fully modulated, oil-cooled, multidisc, and hydraulic-actuated.

John Deere Power Systems
3801 W. Ridgeway Ave.
PO Box 5100
Waterloo, IA 50704-5100
Phone: 800.553.6446
Fax: 319.292.5075

John Deere Power Systems
Usine de Saran
La Foulonnerie - B.P. 11.13
45401 Fleury les Aubrais Cedex
France
Phone: 33.2.38.82.61.19
Fax: 33.2.38.82.60.00

Preliminary Information

All values at rated speed and power with standard options unless otherwise noted. Specifications and design subject to change without notice.